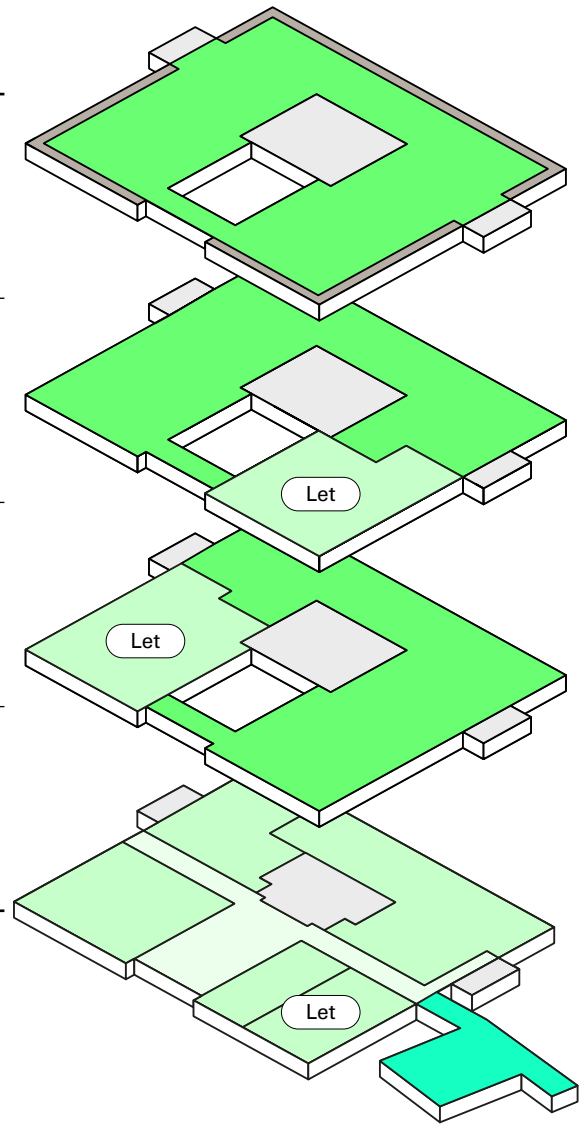


HERE⁺ + NOW⁺

FLOOR PLANS

NOW Building

| Floor | Fit-out | Sq m | Sq ft |
|-------------------------------|--------------|--------------|---------------|
| Third | Office Cat A | 1,457 | 15,688 |
| | Terrace | 96 | 1,029 |
| Second | Cat A | 1,189 | 12,795 |
| First | Cat A | 1,155 | 12,432 |
| Ground | Plug & Play | | LET |
| Total available office | | 3,801 | 40,915 |



All measurements are IPMS 3.

● Office ● Let Office ● Café ● Terrace ● Atrium ● Core

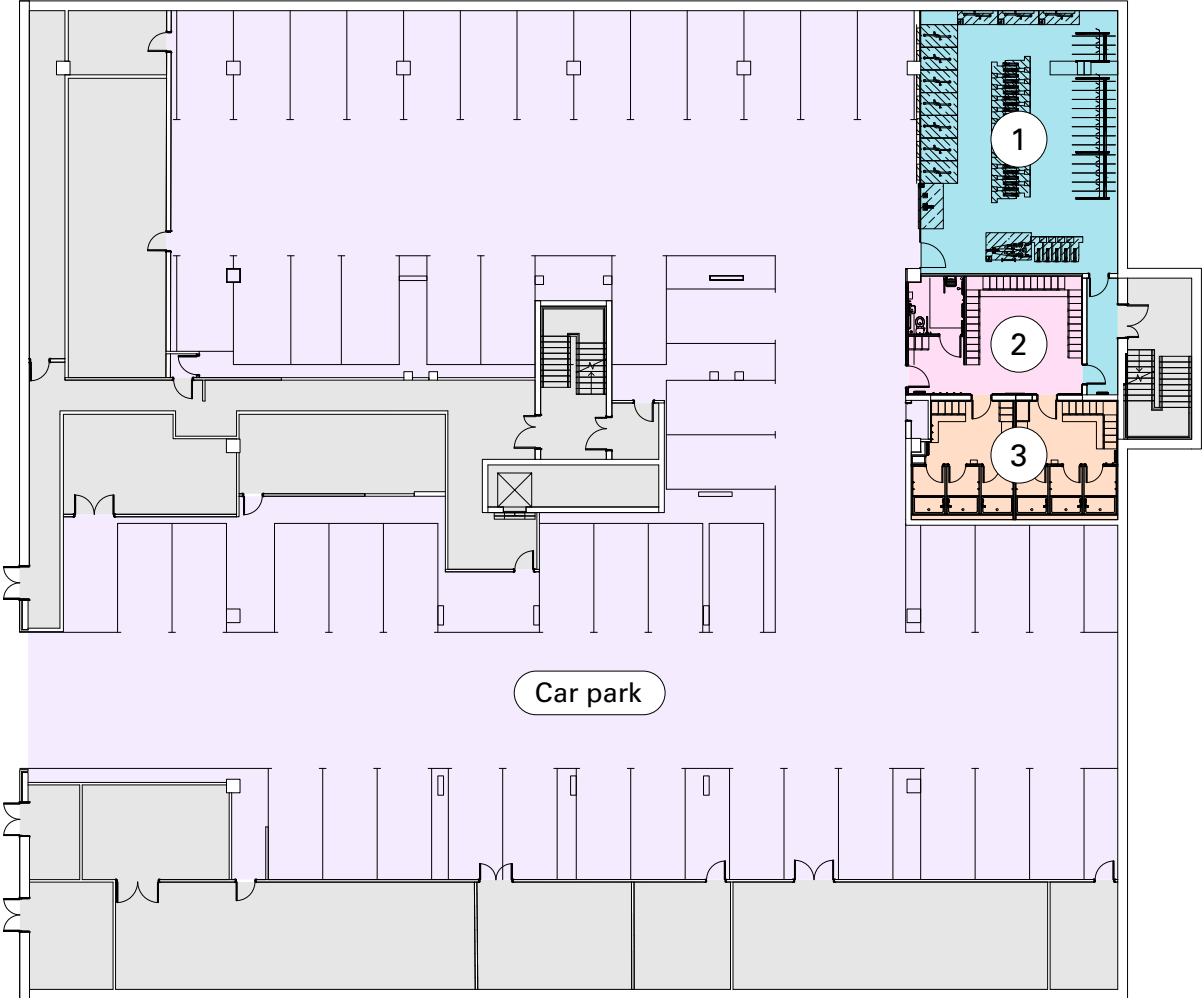
Basement
14,475 sq ft / 1,345 sq m

- ① Cycle Store 79
- ② Lockers 128
- ③ Showers 07

- Core
- Car Park
- Cycle Store
- Showers
- Lockers

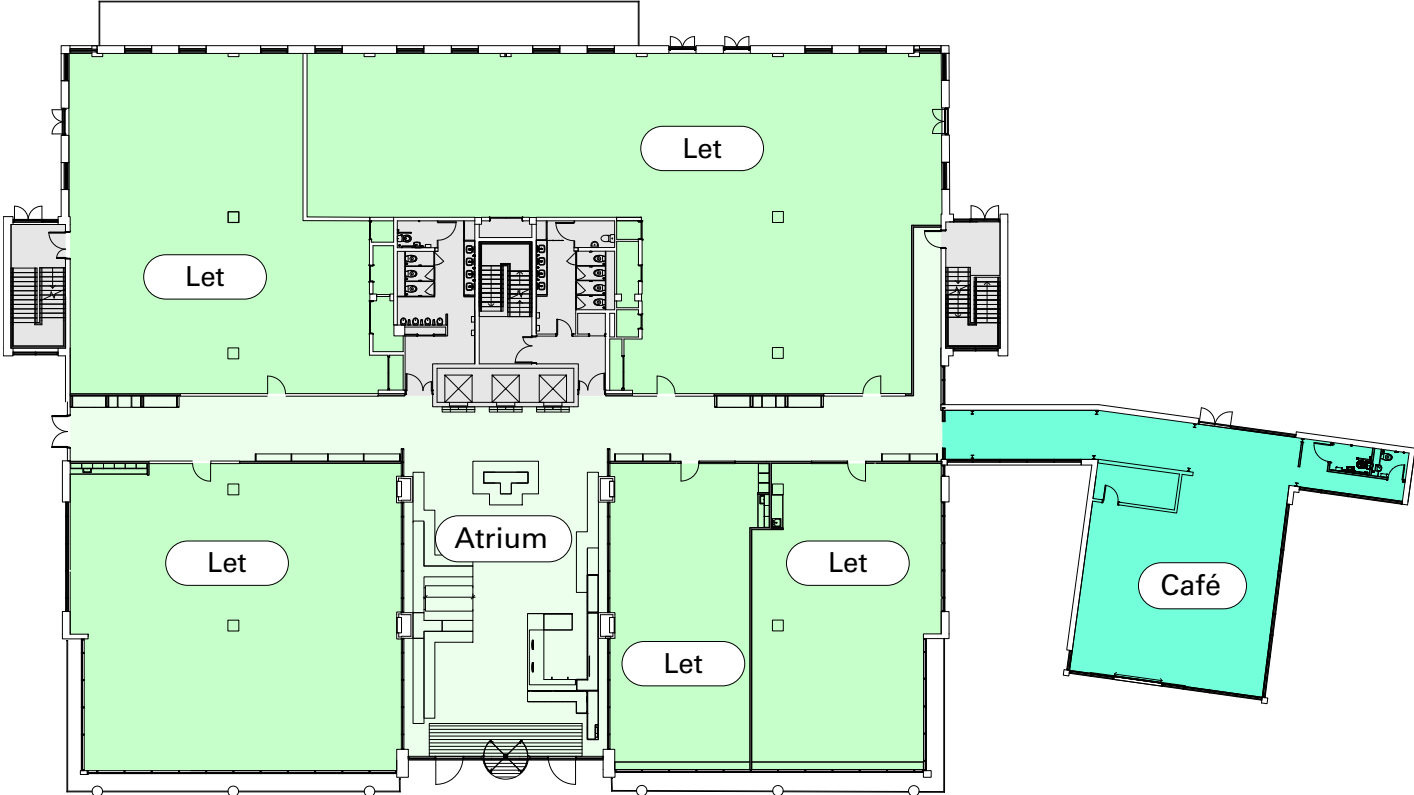


Plans not to scale. Indicative only.



Ground Floor

Let

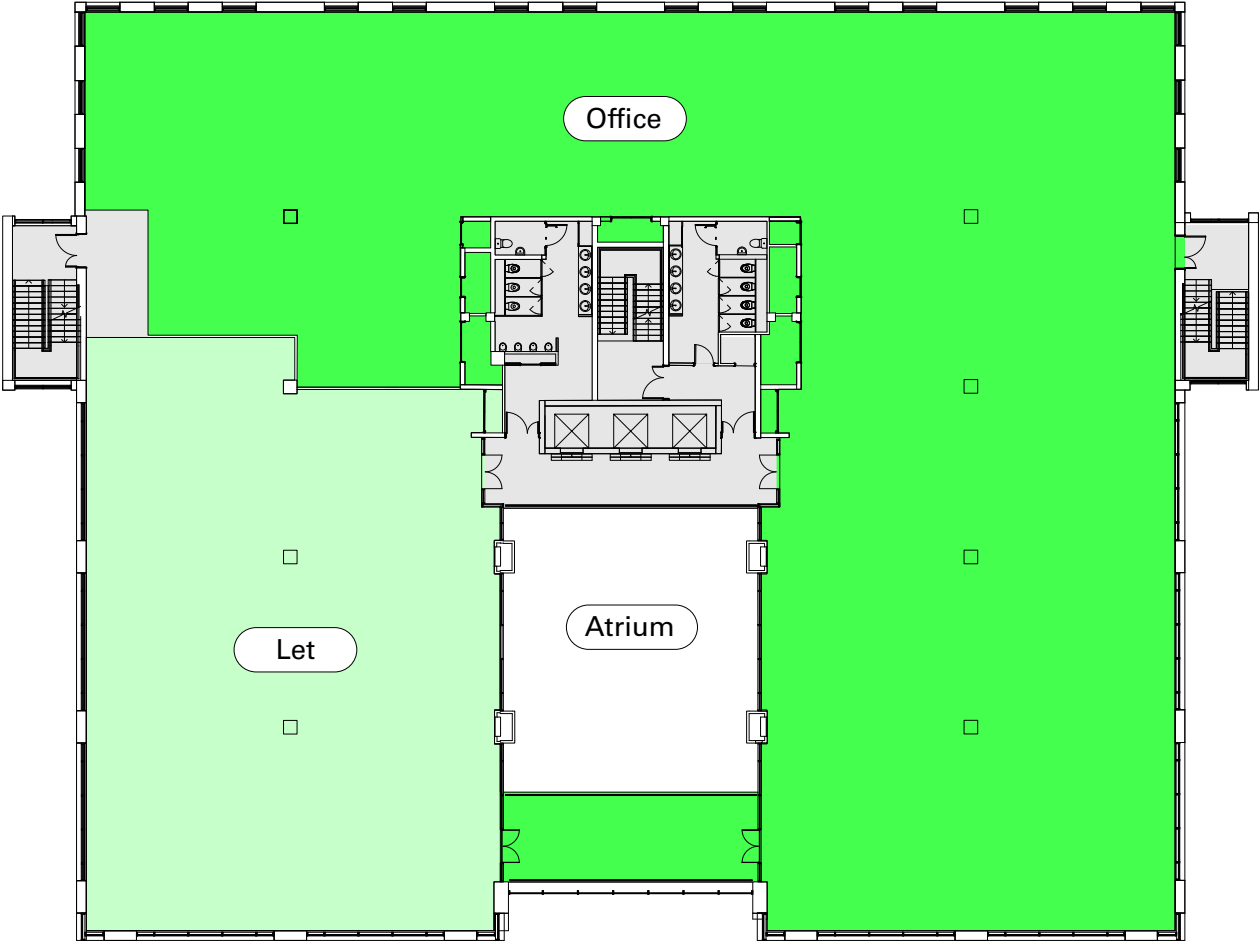


- Let Office
- Core
- Atrium
- Café



Plans not to scale. Indicative only.

Part First Floor
12,432 sq ft / 1,155 sq m

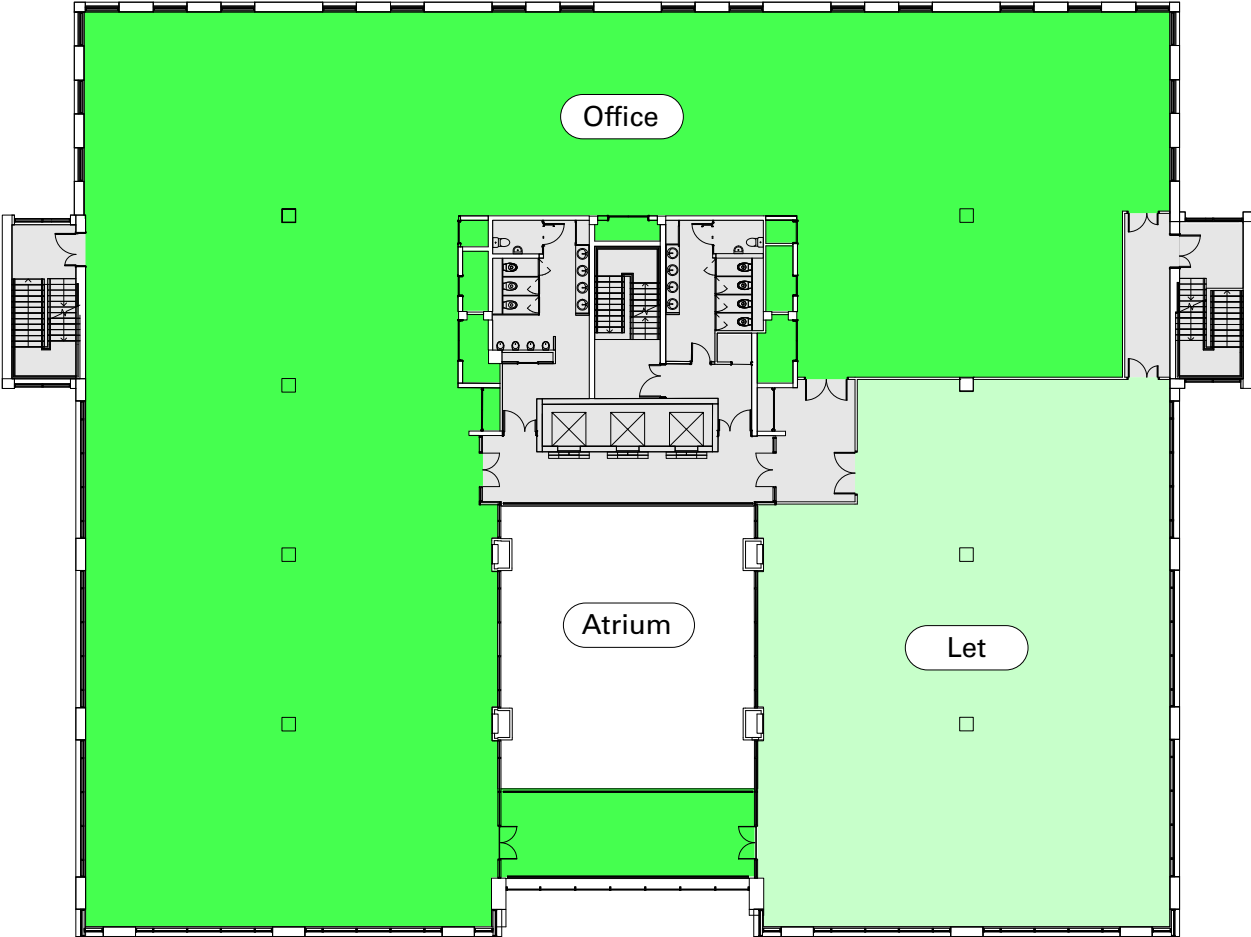


- Office
- Core



Plans not to scale. Indicative only.

Part Second Floor
12,795 sq ft / 1,189 sq m



- Office
- Core

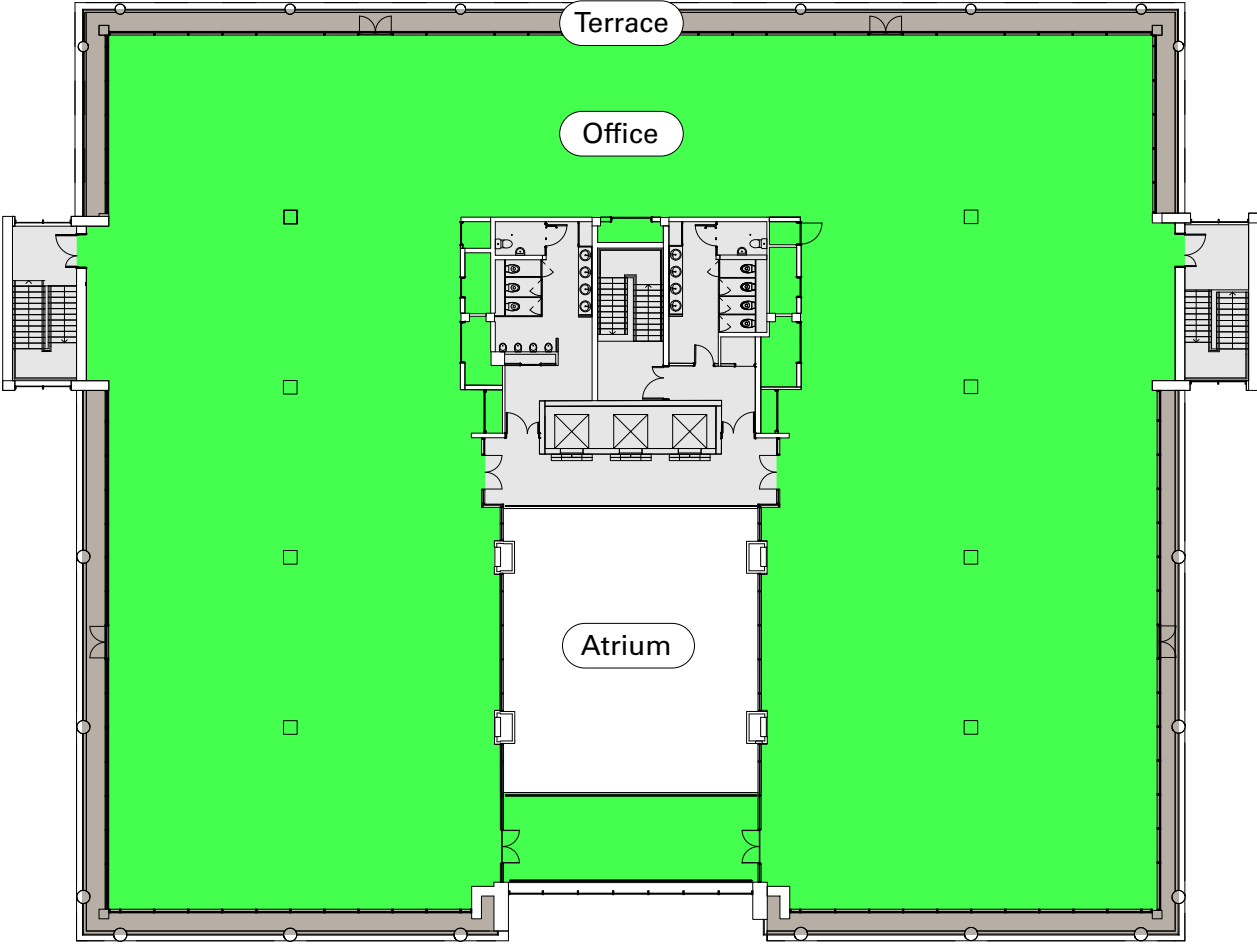


Plans not to scale. Indicative only.

Third Floor
16,717 sq ft / 1,553 sq m

Office 15,688 sq ft / 1,457 sq m

Terrace 1,029 sq ft / 96 sq m



- Office
- Terrace
- Core



Plans not to scale. Indicative only.

Total IPMS area of 16,242 sq ft
is inclusive of the terrace.