

**THE  
BLADE**

**All-inclusive  
Managed  
Workspace**

# THE BLADE

## All-inclusive

## Managed Workspace

**At The Blade, our spaces are designed with dynamic businesses in mind.**

We work with our occupiers to ensure that the considered interior and design details deliver a stunning, light environment in which to work and create.

Our all inclusive managed workspace solution is an option for businesses who want to bypass the admin of running an office and focus on what they do best. **The basic package includes:**



Rent, service charge, dilaps, business rates and insurance



Wifi and connectivity



24/7 security



Cleaning services and waste management



Handyperson services



Staff training courses



Health & Safety Compliance



Electricity



Technical Maintenance



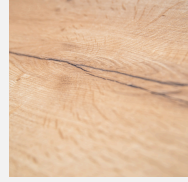
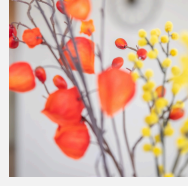
Franking machine



TV Licence



Option for additional bespoke services



# THE BLADE

All-inclusive  
managed  
workspace



@TheBlade



@thebladereading



www.thebladereading.com



## ESG

- ✓ EPC rating B
- ✓ “Very Good” BREEAM rating
- ✓ Building wellbeing sessions
- ✓ Local charity sponsorship
- ✓ Secure cycle parking
- ✓ Excellent shower facilities
- ✓ 8 EV charging stations

At The Blade, our mission is to facilitate improvement for: our occupiers, the local area and the environment. We want to make a long-term impact to the wellbeing of your employees and drive positive environmental change. To achieve this goal, we seek a partnership with our occupiers.

Our on-site asset management team is in the unique position of being able to build strong relationships in the community and provide a platform for local charities to elevate their reach.



**Harry Bevins**  
0118 921 1517  
harrybevins@haslams.co.uk

**Georgia Fearn**  
0118 921 1513  
georgiafearn@haslams.co.uk



**Roddy Abram**  
07899 00108  
roddy.abram@knightfrank.com

**Andy Nixon**  
07973 924947  
andy/nixon@knightfrank.com



**Tom Fletcher**  
07752 127413  
tom@hatch-re.com

**Charlie Benn**  
07563 383 443  
charlie@hatch-re.com