



# BOTANICA

DITTON PARK

FLOOR PLANS





DITTON PARK

UP TO 70,335  
SQ FT OF  
WORKSPACE  
SURROUNDED  
BY NATURE





AVAILABLE NOW



# SCHEDULE OF AREAS

## SCHEDULE OF AREAS






### NORTH

FLOOR	SQ FT	SQ M
LEVEL 2	31,756	2,950.3
LEVEL 1 (PART)	 Hitachi, Ltd.	
LEVEL 1 (PART)	 SEB	
	 Continental	
GROUND	 LINK SPACES	
TOTAL	31,756	2,950.3



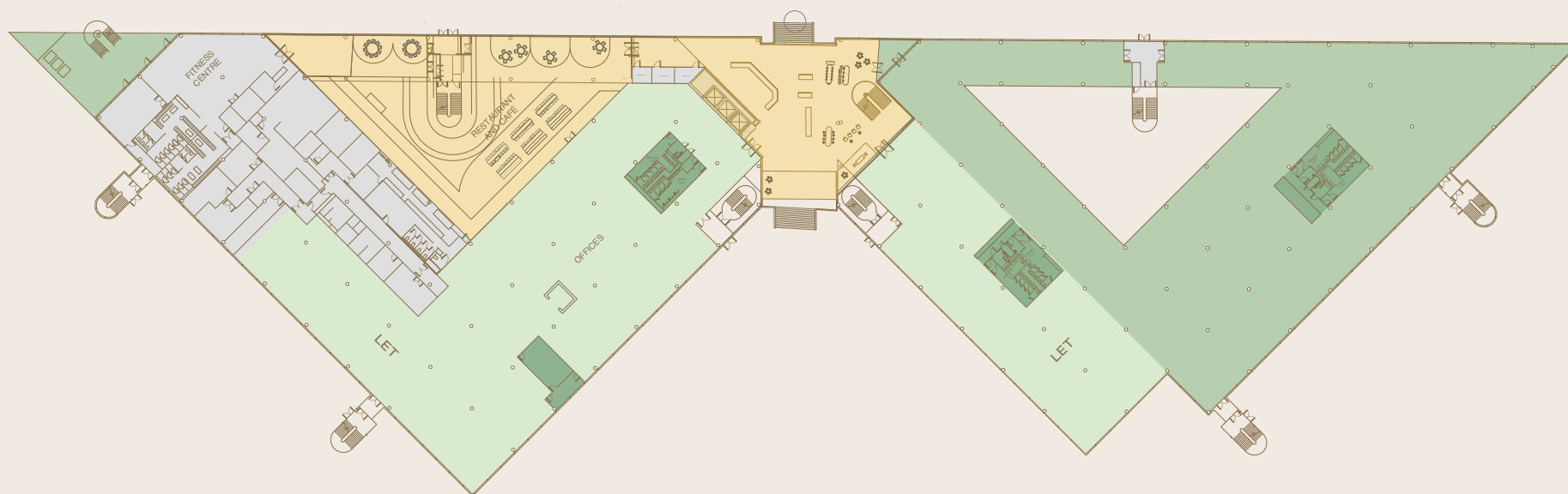
## SCHEDULE OF AREAS

### SOUTH

FLOOR	SQ FT	SQ M
LEVEL 2 (PART)	 DX	
LEVEL 2 (PART)	 arvato BERTELSMANN	
LEVEL 1 (PART)	10,578 SQ FT	982.7 SQ M
LEVEL 1 (PART)	 enterprise	
	 firstorange	
GROUND (PART)	28,001 SQ FT	2,601.3 SQ M
GROUND (PART)	 Allianz	
TOTAL	38,579 SQ FT	3,584.1 SQ M

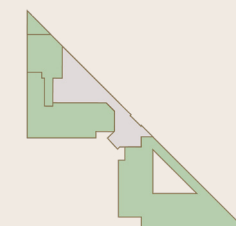
RECEPTION AND BREAK-OUT WORKING

# GROUND

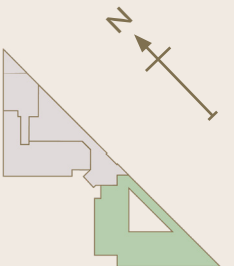
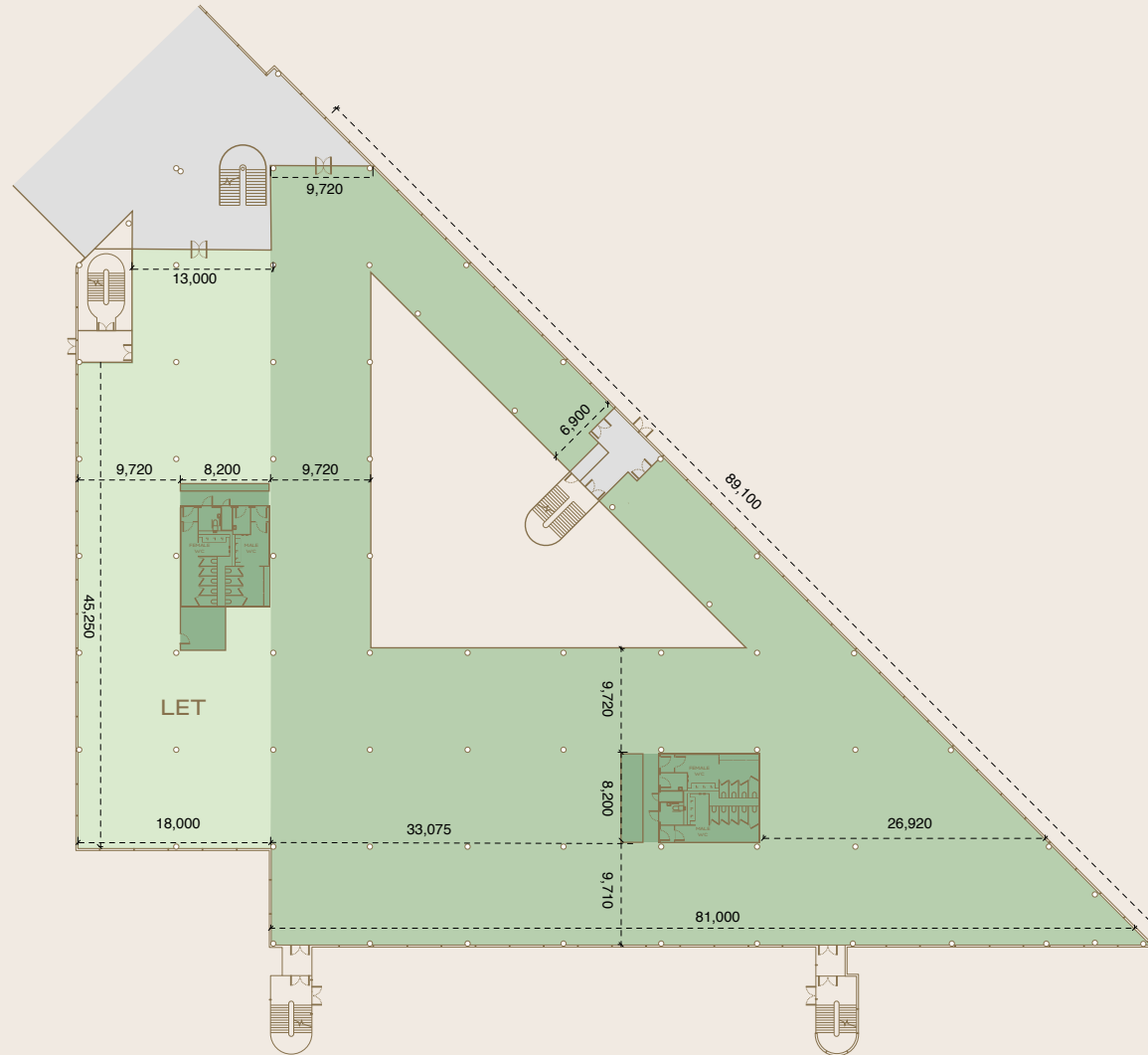


SOUTH

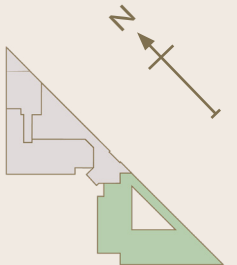
28,001 SQ FT



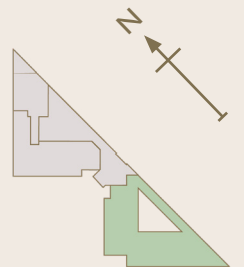
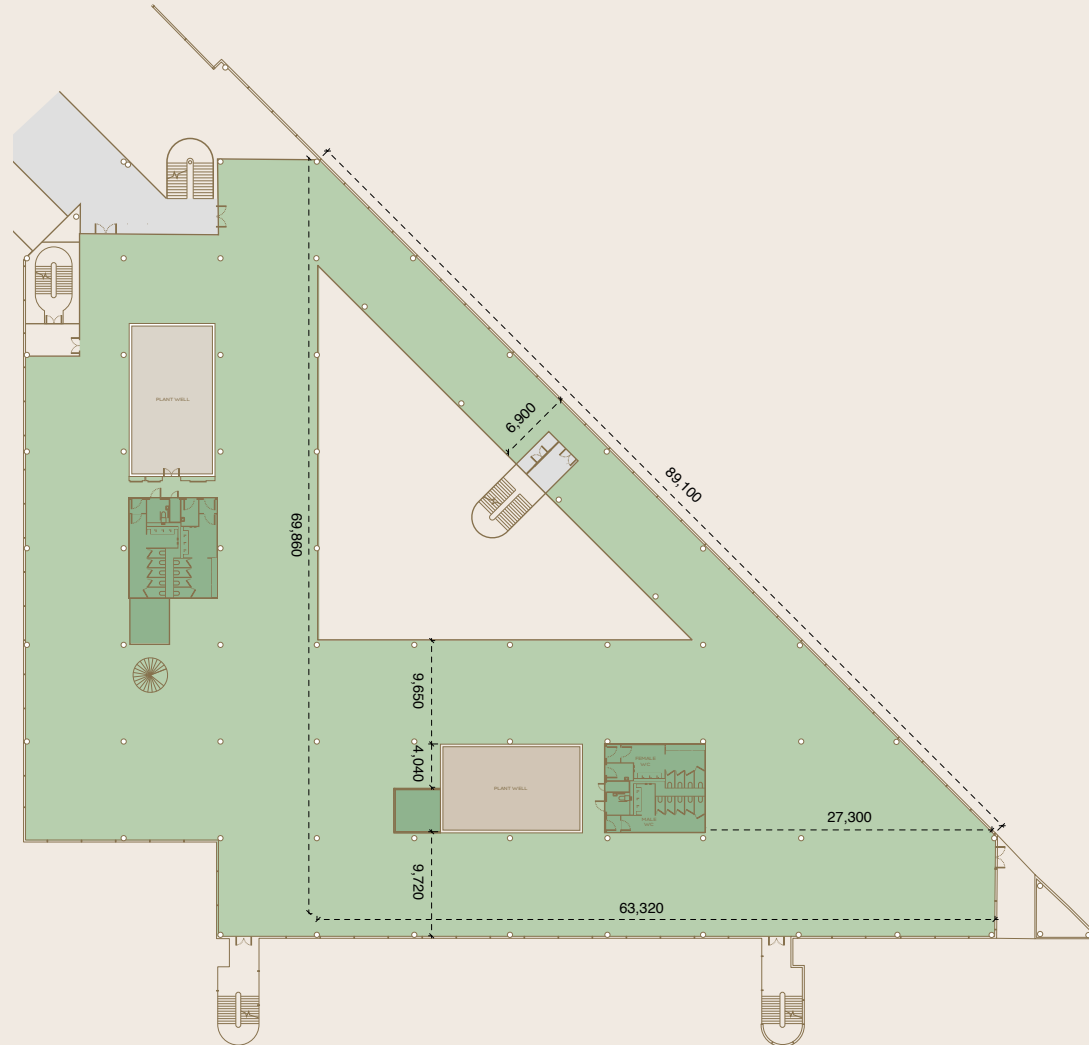
SOUTH  
**GROUND**  
28,001 SQ FT



SOUTH  
**GROUND**  
28,001 SQ FT



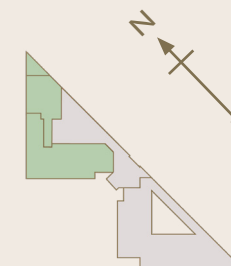
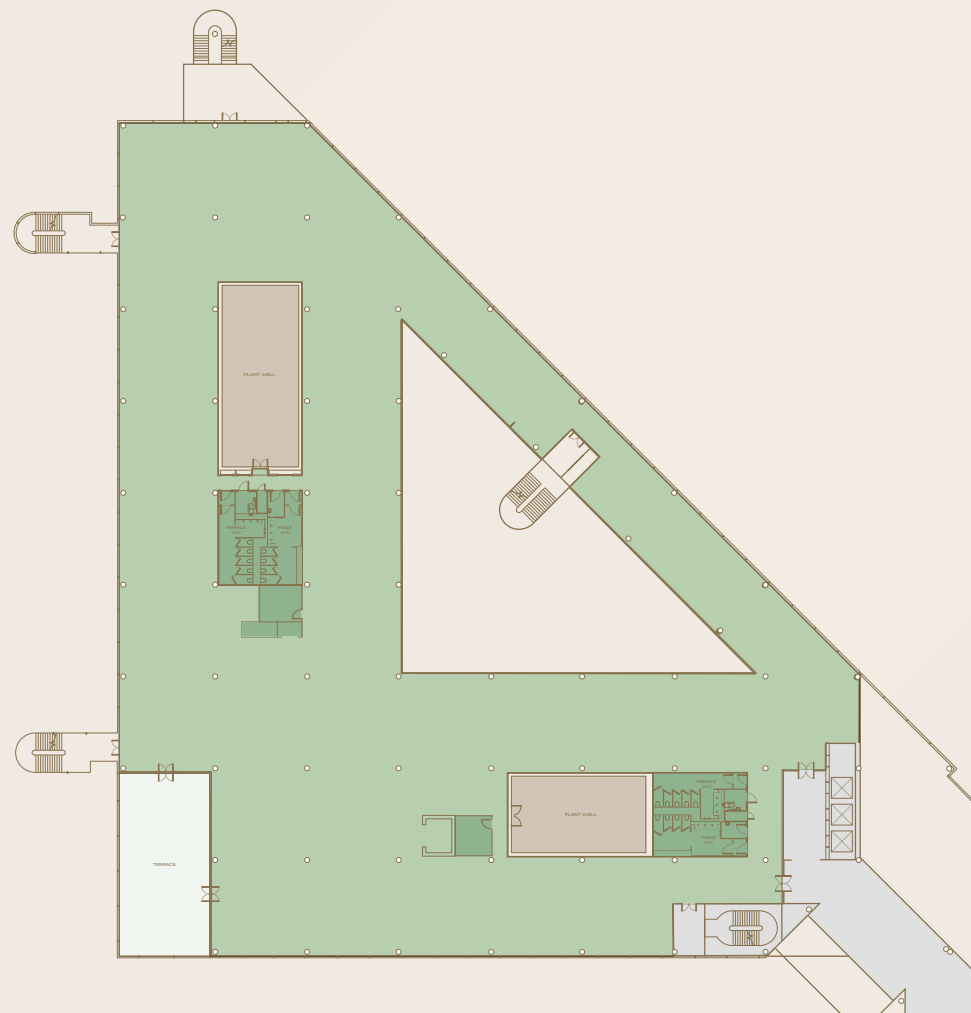
SOUTH  
**LEVEL ONE**  
10,578 SQ FT



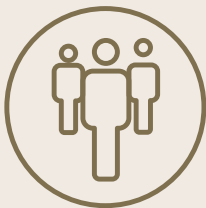
NORTH

# LEVEL TWO

31,756 SQ FT







DESIGNED TO AN OCCUPATIONAL  
DENSITY OF 1:8 M2



EXPOSED  
SERVICES FINISH



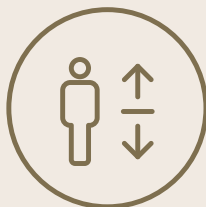
835 CAR PARKING SPACES AN  
EXCELLENT RATIO OF 1:234 SQ FT



SECURE  
CYCLING SPACES



FOUR PIPE FAN COIL  
AIR CONDITIONING



3 X 15 PERSON  
PASSENGER LIFTS



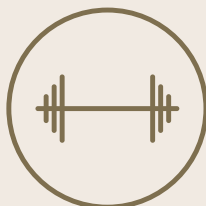
NEW LED  
LIGHTING



FLOOR TO CEILING  
HEIGHT MINIMUM OF 3.35M



SEPARATE DITTON MANOR PROVIDING  
CONFERENCING FACILITIES



NEW ON SITE GYM OPERATED BY  
NUFFIELD HEALTH



LARGE TRIPLE HEIGHT  
RECEPTION



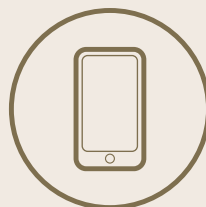
CONFERENCING AND  
MEETING SPACE



NEW ON SITE CAFÉ



REGULAR SHUTTLE  
BUS SERVICES



PARK APP FOR  
TENANT EVENTS



WIRED SCORE  
PLATINUM



FITWELL  
2 STAR RATING



**RODDY ABRAM**

+44 (0) 7899 001 028

[Roddy.Abram@knightfrank.com](mailto:Roddy.Abram@knightfrank.com)

**ANDY NIXON**

+44 (0) 7973 924 947

[Andy.Nixon@knightfrank.com](mailto:Andy.Nixon@knightfrank.com)



**TOM FLETCHER**

+44 (0) 7752 127 413

[Tom@hatch-re.com](mailto:Tom@hatch-re.com)

**CHARLIE BENN**

+44 (0) 7563 383 443

[Charlie@hatch-re.com](mailto:Charlie@hatch-re.com)



**TOBY LUMSDEN**

+44 (0) 7796 444 379

[Tobylumsden@brayfoxsmith.com](mailto:Tobylumsden@brayfoxsmith.com)

**SIMON KNIGHT**

+44 (0) 7818 012 419

[simonknight@brayfoxsmith.com](mailto:simonknight@brayfoxsmith.com)

## BOTANICA-DITTONPARK.COM

**Important Notice**

1. Particulars: These particulars are not an offer or contract, nor part of one. You should not rely on statements by Knight Frank LLP in the particulars or by word of mouth or in writing ("information") as being factually accurate about the property, its condition or its value. Neither Knight Frank LLP nor any joint agent has any authority to make any representations about the property, and accordingly any information given is entirely without responsibility on the part of the agents, seller(s) or lessor(s).

2. Photos etc: The photographs show only certain parts of the property as they appeared at the time they were taken. Areas, measurements and distances given are approximate only.

3. Regulations etc: Any reference to alterations to, or use of, any part of the property does not mean that any necessary planning, building regulations or other consent has been obtained. None of the services or appliances have been tested and no warranty is given or is to be implied that they are in working order. A buyer or lessee must find out by inspection or in other ways that these matters have been properly dealt with and that all information is correct.

4. VAT: The VAT position relating to the property may change without notice.

Knight Frank LLP is a limited liability partnership registered in England with registered number OC305934. Our registered office is 55 Baker Street, London, W1U 8AN, where you may look at a list of members' names.







BOTANICA

DITTON PARK